



Ice Skating on Lake Eden (2000.3.1)



Mimi French in the Weaving Studio, Black Mountain College (2000.3.2)



Shuttle-Craft Practical Loom from the Black Mountain College Weaving Workshop (2000.5.1)



Black Mountain College sign (2002.3.1)



Black Mountain College Bulletin, Volume 3, Number 2: The Composer and the Interpreter (2002.7.1)



Black Mountain College Bulletin, Volume 3, Number 1: Arnold Schoenberg at Seventy (2002.7.3)



Black Mountain College Community Bulletin 5 (2002.7.4)



Black Mountain College Community Bulletin 6 (2002.7.5)



Black Mountain College First Music Institute [program] (2002.7.6)



Letter to family from Alma Stone Williams (2002.7.9)



Kenelm Winslow Fotofolio (2003.7.1.01)



Robert E. Lee Hall (2003.7.1.02)



The path to Lee Hall (2003.7.1.03)



Rear area of Lee Hall (2003.7.1.04)



Lobby of Robert E. Lee Hall (2003.7.1.05)



The Campus Dining Hall (2003.7.1.06)



The Side of the YMCA Building (2003.7.1.07)



Back of the YMCA Building (2003.7.1.08)



Side view of the YMCA building and the left corner of Lee Hall (2003.7.1.09)



Side of the Campus Dining Hall (2003.7.1.10)



Setting of the College in the mountains on the slope of the Blue Ridge (2003.7.1.11)



Mountain ranges in the Swannanoa Valley (2003.7.1.12)



One of the Lodges on Campus (2003.7.1.13)



Black Mountain College Orchestra on the porch of Lee Hall (2003.7.1.14)



Black Mountain College chemistry lab
(2003.7.1.15)



Black Mountain College chemistry lab
(2003.7.1.16)



Black Mountain College chemistry lab
(2003.7.1.17)



Dance on the porch of Robert E. Lee Hall
(2003.7.1.18)



Dance on the porch of Robert E. Lee Hall
(2003.7.1.19)



Black Mountain College work camp
(2003.7.1.20)



Black Mountain College work camp
(2003.7.1.21)



Black Mountain College work camp
(2003.7.1.22)



Black Mountain College work camp
(2003.7.1.23)



Mountain ranges in the Swannanoa Valley
(2003.7.1.24)



Mountain ranges in the Swannanoa Valley
(2003.7.1.25)



The artificially dammed Lake Eden
(2003.7.1.26)



Students rafting at Lake Eden (2003.7.1.27)



Student canoeing at Lake Eden (2003.7.1.28)



Student canoeing at Lake Eden (2003.7.1.29)



Student diving into Lake Eden (2003.7.1.30)



Student diving into Lake Eden (2003.7.1.31)



Student diving into Lake Eden (2003.7.1.32)



Costume party in the dining hall of the Lake Eden campus (2003.7.1.33)



Costume party at the Lake Eden campus (2003.7.1.34)



Costume party at the Lake Eden campus (2003.7.1.35)



Costume party at the Lake Eden campus (2003.7.1.36)



Costume party at the Lake Eden campus (2003.7.1.37)



Dog on the floor of one of the buildings on the Lake Eden campus (2003.7.1.38)



Dogs on the Lake Eden campus property.
(2003.7.1.39)



Student and dog in front of a rear entrance of
Lee Hall (2003.7.1.40)



Student and dog in front of a rear entrance of
Lee Hall (2003.7.1.41)



Student at Lake Eden (2003.7.1.42)



Student at Lake Eden (2003.7.1.43)



Students at Lake Eden (2003.7.1.44)



Student at Lake Eden (2003.7.1.45)



Student at Lake Eden (2003.7.1.46)



Students on the deck behind Lee Hall
(2003.7.1.47)



Students on the deck behind Lee Hall
(2003.7.1.48)



Students on the deck behind Lee Hall
(2003.7.1.49)



Student and dog on the Lake Eden property
(2003.7.1.50)



Student reading, probably in the South Lodge (men's dormitories) of the Lake Eden campus (2003.7.1.51)



Student reading, probably in the South Lodge (men's dormitories) of the Lake Eden campus (2003.7.1.52)



Student off-campus (2003.7.1.53)



Post card (2003.7.1.54)



Post card of a Black Mountain College production (2003.7.1.55)



Post card of a Black Mountain College production (2003.7.1.56)



Post card of an outdoor stage performance (2003.7.1.57)



Outdoor stage performance (2003.7.1.58)



Outdoor stage performance (2003.7.1.59)



Outdoor stage performance (2003.7.1.60)



Outdoor stage performance (2003.7.1.61)



Outdoor stage performance (2003.7.1.62)



Outdoor stage performance (2003.7.1.63)



Outdoor stage performance (2003.7.1.64)



Outdoor stage performance (2003.7.1.65)



Outdoor stage performance (2003.7.1.66)



Outdoor stage performance (2003.7.1.67)



Outdoor stage performance (2003.7.1.68)



Outdoor stage performance (2003.7.1.69)



A traditional Greek production held outdoors
(2003.7.1.70)



A traditional Greek production held outdoors
(2003.7.1.71)



A traditional Greek production held outdoors
(2003.7.1.72)



Throw (2006.20.1)



Dark Gray Throw (2006.20.2)



Placemats (2006.20.3)



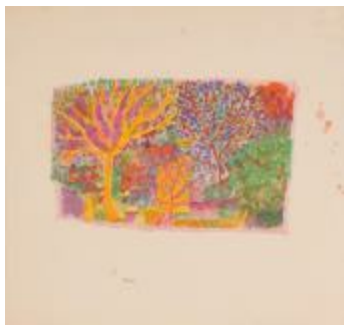
Runner (2006.20.4)



Shawl (2013.12.2)



Untitled (Vase with Flowers) (2013.17.1)



Untitled (Landscape) (2013.17.10)



Untitled (Hillside Landscape) (2013.17.11)



Untitled (Design) (2013.17.12)



Untitled (Floral Design) (2013.17.13)



Untitled (Abstract) (2013.17.16)



Untitled (Flowers in Pot) (2013.17.2)



Untitled (Flowers/Abstract) (2013.17.3)



Untitled (Female Figure) (2013.17.4)



Untitled (Abstract) (2013.17.6)



Untitled (Floral Abstract) (2013.17.7)



Untitled (Floral Abstract Design) (2013.17.8)



Untitled (Female Figure) (2013.17.9)



Untitled (2014.18.1)



Studies Building Postcard (2014.8.1)



Portrait of Janet Heling Roberts (2015.18.1)



Triple Portrait of Janet Heling Roberts
(2015.6.1)



Fiber Samples for Anni Albers' Weaving
Class (2017.10.1)



Weaving Workshop Door (2020.28.1)



Upholstery Fabric (2021.55.1)



Jacket (2022.27.1)



Head (2022.27.3)



BMC Students Painting (2022.3.4)



Untitled (Pencil Sketch Self Portrait)
(2023.22.1)



Untitled (Painted Color Study: Blue, Red,
Orange) (2023.22.3)



Untitled (Color Study: Blue, Yellow, Green)
(2023.22.4)



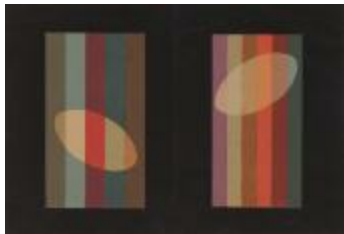
Untitled (Color Study: Red and Blue Yin
Yang Design) (2023.22.5)



Untitled (Color Study: Lavender, Green,
White) (2023.22.6)



Untitled (Color Study: Black, Gray, Tan)
(2023.22.7)



Untitled (Color Study) (2023.22.8)



Josef Albers, Black Mountain College, North
Carolina, Summer 1944 (PG2020.34.1)