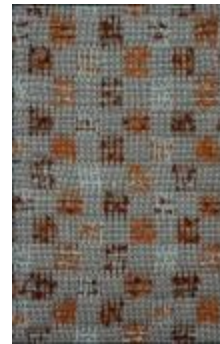




Fall Landscape (1995.3.1)



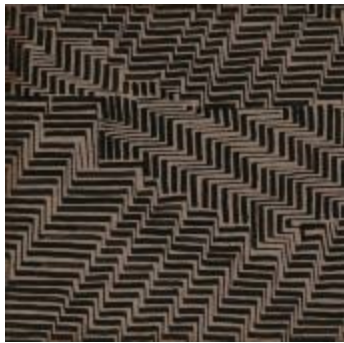
8 Harness Group Weaving Sample
(1997.6.1)



8 Harness Group Weaving Sample
(1997.6.2)



Leaf Study (1997.6.3)



Design Study (1997.6.4)



Color Study (1997.6.5)



Color Study (1998.1.1)



Color Study (1998.1.2)



Color Study (1998.1.3)



Cover for Design magazine (1998.3.1)



Ice Skating on Lake Eden (2000.3.1)



Shuttle-Craft Practical Loom from the Black
Mountain College Weaving Workshop
(2000.5.1)



Black Mountain College sign (2002.3.1)



Untitled (2002.8.4)



Untitled (2004.12.1)



Napkins (2009.6.1-4)



Untitled (2010.1.2)



Untitled (2010.1.3)



Shawl (2013.12.2)



Sketches for Natl. Bankings & Trust, Bank Green Acres, Valley Stream (2013.16.21)



Untitled (2013.16.24)



Untitled (2013.16.25)



Untitled (2013.16.28)



Photograph portfolio of early work by Pete Jennerjahn (2013.16.39)



Untitled (Vase with Flowers) (2013.17.1)



Untitled (Landscape) (2013.17.10)



Untitled (Hillside Landscape) (2013.17.11)



Untitled (Design) (2013.17.12)



Untitled (Floral Design) (2013.17.13)



Untitled (Abstract) (2013.17.16)



Untitled (Flowers in Pot) (2013.17.2)



Untitled (Flowers/Abstract) (2013.17.3)



Untitled (Female Figure) (2013.17.4)



Untitled (Abstract) (2013.17.6)



Untitled (Floral Abstract) (2013.17.7)



Untitled (Floral Abstract Design) (2013.17.8)



Untitled (Female Figure) (2013.17.9)



Mother and Child (2020.31.1)



Upholstery Fabric (2021.55.1)



Night Cathedral (2021.7.6)



Bow Tie (2021.7.7)



She and He (2021.7.9)



Head (2022.27.3)