



The natural way to draw (167440459)



Chessboard (1995.13.1)



Ingeborg Lauterstein Wearing Centaur Costume Designed by Robert Rauschenberg (1995.15.1)



Fall Landscape (1995.3.1)



Still Life With Head (1995.3.4)



The Studio (1995.3.7)



Untitled (1995.30.1)



Untitled (1995.30.2)



Untitled (1995.30.3)



"Students and Faculty Construct their College Building" (1995.8.1)



Kenneth Noland Drawing a Model at the Rue d'Assas Atelier of Instructor Ossip Zadkine (1996.9.2)



Postcard to Secunda (1996.9.5)



Program for The Ruse of the Medusa (1997.1.1)



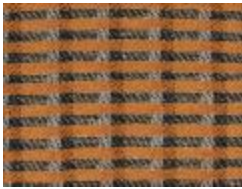
Stool (1997.2.1)



Side Table (1997.2.2)



Conversation Chair (1997.2.3)



8 Harness Group Weaving Sample (1997.6.1)



8 Harness Group Weaving Sample (1997.6.2)



Leaf Study (1997.6.3)



Design Study (1997.6.4)



Color Study (1997.6.5)



Color Study (1998.1.1)



Color Study (1998.1.2)



Color Study (1998.1.3)



William Shrauger, Merce Cunningham, and Elaine de Kooning in the Black Mountain College production of *The Ruse of the Medusa* (translated by M.C. Richards) (1998.2.1)



Wilma Furstenberg in the Weaving Workshop (1998.2.3)



Cover for Design magazine (1998.3.1)



Ice Skating on Lake Eden (2000.3.1)



Mimi French in the Weaving Studio, Black Mountain College (2000.3.2)



Shuttle-Craft Practical Loom from the Black Mountain College Weaving Workshop (2000.5.1)



Black Mountain College sign (2002.3.1)



Black Mountain College Bulletin, Volume 3, Number 2: The Composer and the Interpreter (2002.7.1)



Black Mountain College Bulletin, Volume 3, Number 5: Second Music Institute (2002.7.2)



Black Mountain College Bulletin, Volume 3, Number 1: Arnold Schoenberg at Seventy (2002.7.3)



Black Mountain College Community Bulletin 5 (2002.7.4)



Black Mountain College Community Bulletin 6 (2002.7.5)



Black Mountain College First Music Institute [program] (2002.7.6)



Letter to Alma Stone Williams (2002.7.8)



Letter to family from Alma Stone Williams (2002.7.9)



Untitled (2002.8.1)



Untitled (2002.8.4)



Untitled (2002.8.5)



Ilya Bolotowsky at Black Mountain College (2002.8.7)



Ruth Asawa at Black Mountain College (2002.8.8)



Unidentified Student at Black Mountain College (2002.8.9)



Untitled (2003.1.2)



Robert E. Lee Hall (2003.7.1)



Setting of the College in the mountains on the slope of the Blue Ridge (2003.7.10)



Mountain ranges in the Swannanoa Valley (2003.7.11)



One of the lodges on the Lake Eden Campus (2003.7.12)



Black Mountain College Orchestra on the porch of Lee Hall (2003.7.13)



Black Mountain College chemistry lab (2003.7.14)



Black Mountain College chemistry lab (2003.7.15)



Black Mountain College chemistry lab (2003.7.16)



Dance on the porch of Robert E. Lee Hall (2003.7.17)



Dance on the porch of Robert E. Lee Hall (2003.7.18)



Black Mountain College work camp (2003.7.19)



The path to Lee Hall (2003.7.2)



Black Mountain College work camp (2003.7.20)



Black Mountain College work camp (2003.7.21)



Black Mountain College work camp (2003.7.22)



Mountain ranges in the Swannanoa Valley (2003.7.23)



Mountain ranges in the Swannanoa Valley (2003.7.24)



The artificially dammed Lake Eden (2003.7.25)



Students rafting at Lake Eden (2003.7.26)



Student canoeing at Lake Eden (2003.7.27)



Student canoeing at Lake Eden (2003.7.28)



Student diving into Lake Eden (2003.7.29)



Rear area of Lee Hall (2003.7.3)



Student diving into Lake Eden (2003.7.30)



Student diving into Lake Eden (2003.7.31)



Costume party in the dining hall of the Lake Eden campus (2003.7.32)



Costume party at the Lake Eden campus (2003.7.33)



Costume party at the Lake Eden campus (2003.7.34)



Costume party at the Lake Eden campus (2003.7.35)



Costume party at the Lake Eden campus (2003.7.36)



Dog on the floor of one of the buildings on the Lake Eden campus (2003.7.37)



Dogs on the Lake Eden campus property. (2003.7.38)



Student and dog in front of a rear entrance of Lee Hall (2003.7.39)



Lobby of Robert E. Lee Hall (2003.7.4)



Student and dog in front of a rear entrance of Lee Hall (2003.7.40)



Student at Lake Eden (2003.7.41)



Student at Lake Eden (2003.7.42)



Students at Lake Eden (2003.7.43)



Student at Lake Eden (2003.7.44)



Student at Lake Eden (2003.7.45)



Students on the deck behind Lee Hall (2003.7.46)



Students on the deck behind Lee Hall (2003.7.47)



Students on the deck behind Lee Hall (2003.7.48)



Student and dog on the Lake Eden property (2003.7.49)



The campus dining hall (2003.7.5)



Student reading, probably in the South Lodge (men's dormitories) of the Lake Eden campus (2003.7.50)



Student reading, probably in the South Lodge (men's dormitories) of the Lake Eden campus (2003.7.51)



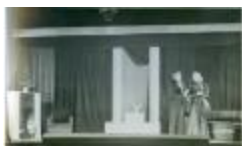
Student off-campus (2003.7.52)



Post card (2003.7.53)



Post card of a Black Mountain College production (2003.7.54)



Post card of a Black Mountain College production (2003.7.55)



Post card of an outdoor stage performance (2003.7.56)



Outdoor stage performance (2003.7.57)



Outdoor stage performance (2003.7.58)



Outdoor stage performance (2003.7.59)



The side of the YMCA building (2003.7.6)



Outdoor stage performance (2003.7.60)



Outdoor stage performance (2003.7.61)



Outdoor stage performance (2003.7.62)



Outdoor stage performance (2003.7.63)



Outdoor stage performance (2003.7.64)



Outdoor stage performance (2003.7.65)



Outdoor stage performance (2003.7.66)



Outdoor stage performance (2003.7.67)



Outdoor stage performance (2003.7.68)



A traditional Greek production held outdoors (2003.7.69)



The back of the YMCA building (2003.7.7)



A traditional Greek production held outdoors (2003.7.70)



A traditional Greek production held outdoors (2003.7.71)



The side of the campus dining hall (2003.7.8)



Side view of the YMCA building and the left corner of Lee Hall (2003.7.9)



Untitled (Abstract Still Life) (2004.1.1)



Untitled (2004.12.1)



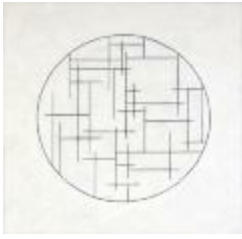
Portrait of Sheila Marbain (2004.5.1)



Two Women (2004.6.1)



Untitled (2004.8.10)



Untitled (2004.8.14)



Untitled (2004.8.5)



Untitled (2004.8.7)



Untitled (2004.8.8)



Untitled (2004.8.9)



Throw (2006.20.1)



Dark Gray Throw (2006.20.2)



Placemats (2006.20.3)



Runner (2006.20.4)



Transformation (2006.4.1)



Stool Made at Black Mountain College (2007.2.1)



Wooden Plates Made at Black Mountain College (2007.2.2-8)



Farmhouse and Mountains (2007.2.9)



Cora Kelley Ward (2008.15.1)



Leaf Conversation (2008.34.1)



Untitled (2009.10.1)



Untitled (2009.18.3)



Cross (2009.5.1)



Napkins (2009.6.1-4)



Score for 3-Part Motet for Soprano, Alto and Tenor (2009.8.1)



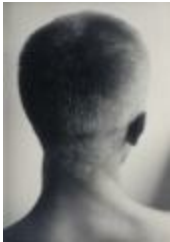
Placemats (2010.1.1)



Untitled (2010.1.2)



Untitled (2010.1.3)



Ray Johnson (Back of Head) (2010.3.1)



Portrait of Victor Kalos (2010.5.2)



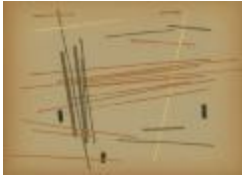
Folded Paper Study for Josef Albers' Course (2010.6.1)



Three Lights Falling on a Surface (Exercise in Transparency) (2010.6.2)



Study in Color Dissonance (2010.6.3)



Free Color Study (2010.6.4)



The Studies Building (2010.9.1)



Block Print #2 (2011.18.1)



Weaving and Bookbinding for the Cover of Johannes Brahms: Fifty Selected Songs (2013.12.1)



Shawl (2013.12.2)



Sketches for Natl. Bankings & Trust, Bank Green Acres, Valley Stream (2013.16.21)



Untitled (2013.16.24)



Untitled (2013.16.25)



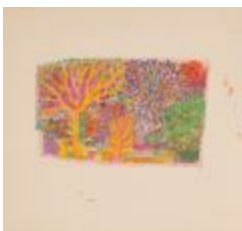
Untitled (2013.16.28)



Photograph portfolio of early work by Pete Jennerjahn (2013.16.39)



Untitled (Vase with Flowers) (2013.17.1)



Untitled (Landscape) (2013.17.10)



Untitled (Hillside Landscape) (2013.17.11)



Untitled (Design) (2013.17.12)



Untitled (Floral Design) (2013.17.13)



Untitled (2013.17.15)



Untitled (Abstract) (2013.17.16)



Untitled (Flowers in Pot) (2013.17.2)



Untitled (Flowers/Abstract) (2013.17.3)



Untitled (Female Figure) (2013.17.4)



Untitled (Abstract) (2013.17.6)



Untitled (Floral Abstract) (2013.17.7)



Untitled (Floral Abstract Design) (2013.17.8)



Untitled (Female Figure) (2013.17.9)



Untitled (Marbled Paper) (2013.9.1)



Ducks on Lake Eden (2014.16.1)



Untitled (2014.18.1)



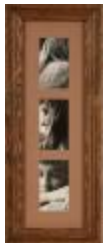
Studies Building Postcard (2014.8.1)



Untitled (2015.1.1)



Portrait of Janet Heling Roberts (2015.18.1)



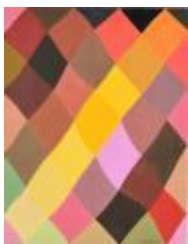
Triple Portrait of Janet Heling Roberts (2015.6.1)



Untitled (2016.4.1)



Sunset Flowers (2017.1.1)



N.O. #24 (2017.1.4)



Fiber Samples for Anni Albers' Weaving Class (2017.10.1)



Quiet House Door (2018.8.1)



Weaving Workshop Door (2020.28.1)



Upholstery Fabric (2021.55.1)



Still Life with Open Door (2021.7.1)



Untitled (BMC) (2021.7.2)



Large Pitcher and Fruit (2021.7.4)



Jacket (2022.27.1)



Head (2022.27.3)



English Village (PG2003.3.1)



**Josef Albers, Black Mountain College, North Carolina, Summer 1944
(PG2020.34.1)**
