



Untitled (Fallen Tree) (1995.14.1)



Hokusai's Wave Winding Up (1995.14.2)



Flying Sand Nude (1995.14.3)



Traffic Lane, 96th St. and Madison Ave, NYC (1995.14.4)



Untitled (Paint on Pavement) (1995.14.5)



Wet Sidewalk, 5th Ave, NYC (1995.14.6)



Mary Holden, Founding Director, BMCM+AC (1995.14.7)



New Amoco Station, North Carolina (1995.14.8)



Ingeborg Lauterstein Wearing Centaur Costume Designed by Robert Rauschenberg (1995.15.1)



The Wheat Field (1995.25.1)



Untitled (1995.30.1)



Untitled (1995.30.2)



Untitled (1995.30.3)



Katherine Litz Wearing Her Costume for "Fire in the Snow" (1995.7.1)



William Shrauger, Merce Cunningham, and Elaine de Kooning in the Black Mountain College production of *The Ruse of the Medusa* (translated by M.C. Richards) (1998.2.1)



Wilma Furstenberg in the Weaving Workshop (1998.2.3)



Beauty and the Beast (Francine du Plessix Gray and Joel Oppenheimer) (1998.5.1)



Robert Duncan, San Francisco (1998.5.10)



Robert Duncan, Point Lobos (1998.5.11)



Stefan Wolpe, Black Mountain College (1998.5.12)



Harry Callahan, Providence, RI (1998.5.13)



Orcenith Lyle Bongé, Biloxi, MS (1998.5.14)



John Wieners, Aspen, CO (1998.5.15)



Suzi Gablik Near Whitman's Grave, Camden, NJ (1998.5.16)



Buckminster Fuller, Carbondale, IL (1998.5.17)



Francine du Plessix Gray, Cornwall Bridge, CT (1998.5.18)



Robert Duncan with Portrait by Jess, San Fransisco (1998.5.19)



Katherine Litz, Black Mountain College (1998.5.2)



Paul Goodman, Music Tent, Aspen, CO (1998.5.20)



Fielding Dawson, Laurinburg, NC (1998.5.21)



Joel Oppenheimer, Henniker, NH (1998.5.22)



Russell Edson, New Canaan, CT (1998.5.24)



Stefan Wolpe, Black Mountain College (1998.5.25)



Robert Creeley and Dan Rice, Black Mountain College (1998.5.26)



Edward Dahlberg, NYC (1998.5.27)



Aaron Siskind (1998.5.28)



Lou Harrison, Marin County, CA (1998.5.29)



Charles Olson Writing The Maximus Poems (1998.5.3)



Charles Olson, Black Mountain College (1998.5.4)



Lou Harrison, Music Hut, Black Mountain College (1998.5.5)



Portrait of the Artist (Robert Creeley) As a Spanish Assassin (1998.5.6)



Charles Olson, Black Mountain College (1998.5.8)



Robert Creeley, Banyalbufar, Mallorca (1998.5.9)



Ice Skating on Lake Eden (2000.3.1)



Mimi French in the Weaving Studio, Black Mountain College (2000.3.2)



Untitled (2002.8.1)



Untitled Part I (2002.8.11)



Untitled part II (2002.8.12)



Reflections on Mylar (2002.8.2)



Reflections on Mylar (2002.8.3)



Untitled (2002.8.4)



Untitled (2002.8.5)



Ilya Bolotowsky at Black Mountain College (2002.8.7)



Ruth Asawa at Black Mountain College (2002.8.8)



Unidentified Student at Black Mountain College (2002.8.9)



Robert E. Lee Hall (2003.7.1)



**Setting of the College in the mountains on the slope of the Blue Ridge
(2003.7.10)**



Mountain ranges in the Swannanoa Valley (2003.7.11)



One of the lodges on the Lake Eden Campus (2003.7.12)



**Black Mountain College Orchestra on the porch of Lee Hall
(2003.7.13)**



Black Mountain College chemistry lab (2003.7.14)



Black Mountain College chemistry lab (2003.7.15)



Black Mountain College chemistry lab (2003.7.16)



Dance on the porch of Robert E. Lee Hall (2003.7.17)



Dance on the porch of Robert E. Lee Hall (2003.7.18)



Black Mountain College work camp (2003.7.19)



The path to Lee Hall (2003.7.2)



Black Mountain College work camp (2003.7.20)



Black Mountain College work camp (2003.7.21)



Black Mountain College work camp (2003.7.22)



Mountain ranges in the Swannanoa Valley (2003.7.23)



Mountain ranges in the Swannanoa Valley (2003.7.24)



The artificially dammed Lake Eden (2003.7.25)



Students rafting at Lake Eden (2003.7.26)



Student canoeing at Lake Eden (2003.7.27)



Student canoeing at Lake Eden (2003.7.28)



Student diving into Lake Eden (2003.7.29)



Rear area of Lee Hall (2003.7.3)



Student diving into Lake Eden (2003.7.30)



Student diving into Lake Eden (2003.7.31)



Costume party in the dining hall of the Lake Eden campus (2003.7.32)



Costume party at the Lake Eden campus (2003.7.33)



Costume party at the Lake Eden campus (2003.7.34)



Costume party at the Lake Eden campus (2003.7.35)



Costume party at the Lake Eden campus (2003.7.36)



Dog on the floor of one of the buildings on the Lake Eden campus (2003.7.37)



Dogs on the Lake Eden campus property. (2003.7.38)



Student and dog in front of a rear entrance of Lee Hall (2003.7.39)



Lobby of Robert E. Lee Hall (2003.7.4)



Student and dog in front of a rear entrance of Lee Hall (2003.7.40)



Student at Lake Eden (2003.7.41)



Student at Lake Eden (2003.7.42)



Students at Lake Eden (2003.7.43)



Student at Lake Eden (2003.7.44)



Student at Lake Eden (2003.7.45)



Students on the deck behind Lee Hall (2003.7.46)



Students on the deck behind Lee Hall (2003.7.47)



Students on the deck behind Lee Hall (2003.7.48)



Student and dog on the Lake Eden property (2003.7.49)



The campus dining hall (2003.7.5)



Student reading, probably in the South Lodge (men's dormitories) of the Lake Eden campus (2003.7.50)



Student reading, probably in the South Lodge (men's dormitories) of the Lake Eden campus (2003.7.51)



Student off-campus (2003.7.52)



Outdoor stage performance (2003.7.57)



Outdoor stage performance (2003.7.58)



Outdoor stage performance (2003.7.59)



The side of the YMCA building (2003.7.6)



Outdoor stage performance (2003.7.60)



Outdoor stage performance (2003.7.61)



Outdoor stage performance (2003.7.62)



Outdoor stage performance (2003.7.63)



Outdoor stage performance (2003.7.64)



Outdoor stage performance (2003.7.65)



Outdoor stage performance (2003.7.66)



Outdoor stage performance (2003.7.67)



Outdoor stage performance (2003.7.68)



A traditional Greek production held outdoors (2003.7.69)



The back of the YMCA building (2003.7.7)



A traditional Greek production held outdoors (2003.7.70)



A traditional Greek production held outdoors (2003.7.71)



The side of the campus dining hall (2003.7.8)



Side view of the YMCA building and the left corner of Lee Hall (2003.7.9)



Untitled (2004.12.1)



Farmhouse and Mountains (2007.2.9)



Dorothea Rockburne (2008.10.1)



Natasha Goldowski (2008.10.2)



Cora Kelley Ward (2008.15.1)



Black Mountain College Stairwell in Studies Building with Mailboxes (2008.26.1)



The Quiet House (2008.28.1)



Times Square (2008.32.1)



Marie Tavrogos Stilkind at the Museum of Modern Art (2009.19.1)



Marie Tavroges Stilkind at the Museum of Modern Art (2009.19.2)



Marie Tavroges Stilkind at the Museum of Modern Art (2009.19.3)



Marie Tavroges Stilkind at the Museum of Modern Art (2009.19.4)



Untitled (2010.1.2)



Untitled (2010.1.3)



Untitled (Ray Johnson Outside a Bookstore) (2010.21.1)



Ray Johnson (Back of Head) (2010.3.1)



Lake Eden and Mae West (2010.5.1)



Portrait of Victor Kalos (2010.5.2)



Portrait of Tommy Jackson (2010.5.3)



Portrait of Nick Cernovitch (2010.5.4)



Portrait of Vera Williams (2010.5.5)



Maple/Lake Eden (2010.5.6)



The Studies Building (2010.9.1)



Portrait of Robert Duncan (2013.13.3)



Photograph portfolio of early work by Pete Jennerjahn (2013.16.39)



Untitled (Iris) (2013.2.7)



Untitled (Cabbage) (2013.2.9)



John Cage - Escaping the Frame (2015.12.1)



Portrait of Janet Heling Roberts (2015.18.1)



Claire Florsheim (Zeisler) (2015.21.1)



Magic Realism (2015.23.1)



Untitled (2015.23.2)



Untitled (2015.23.3)



Untitled (2015.23.4)



**Fuller Geodesic Dome for Children's Theater, San Diego, California
(2015.28.1)**



Triple Portrait of Janet Heling Roberts (2015.6.1)



Bob Turner's Hands (2016.14.1)



Landscape Near Lake Eden in the Snow (2016.24.1)



Barn and Silo with Cow in Doorway (2016.24.3)



Elizabeth Jennerjahn Dancing at Black Mountain College (2017.18.1)



Quiet House Door (2018.8.1)



Geo Series #38 (2019.22.17)



Light Memory #1 (2019.22.20)



Light Memory #2 (2019.22.33)



Light Memory #3 (2019.22.34)



Light Memory #4 (2019.22.35)



Light Memory #5 (2019.22.36)



Light Memory #6 (2019.22.37)



Earliest Brown Print #32 (2019.22.4)



Serpents #3 (2019.22.43)



Serpents #1 (2019.22.44)



Serpents #10 (2019.22.45)



Serpents #4 (2019.22.47)



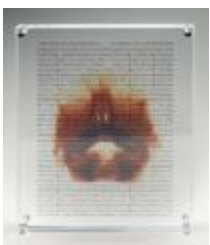
Serpents #7 (2019.22.48)



Serpents #8 (2019.22.49)



Earliest Brown Print #13 (2019.22.5)



Transmissions 14 (2019.22.62)



Light Memory #7 (2019.22.67)



Light Memory #8 (2019.22.68)



**Floating Plastic: Illusionistic (Schwebende Plastik: Illusionistisch)
(2019.3.1)**



Bauhaus Tea Strainers (2019.3.10)



Tea Infuser Set (2019.3.11)



Electric Tea Kettle, stainless steel (2019.3.12)



Bauhaus Textile (2019.3.13)



Wall Hanging (2019.3.14)



Bauhaus Table Lamps (2019.3.15)



**Balance Study with Loosely Suspended Pendulum
(Gleichgewichtskonstruktion mit einem locker aufgehängten pendel)
(2019.3.2)**



**Floating Plastic: Illusionistic (Schwebende Plastik: Illusionistisch)
(2019.3.3)**



**Study of a Mechanical Window Sculpture (Studie su einer
mechnischen schaufensterplastik) (2019.3.4)**



Coffee Dishes (Kaffeegeschirr) (2019.3.5)



Masters' House, Bauhaus Dessau (2019.3.6)



Masters' House Interior (2019.3.7)



Masters' House Interior (2019.3.8)



Cocoa Pot and Cup and Storage Containers (2019.3.9)



**Josef Albers, Black Mountain College, North Carolina, Summer 1944
(PG2020.34.1)**
