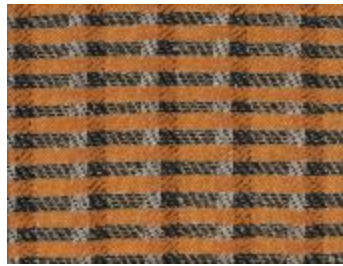
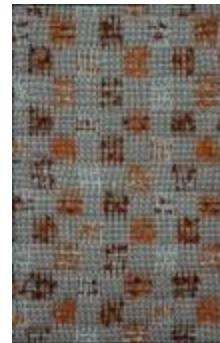




The Studio (1995.3.7)



8 Harness Group Weaving Sample
(1997.6.1)



8 Harness Group Weaving Sample
(1997.6.2)



Leaf Study (1997.6.3)



Design Study (1997.6.4)



Color Study (1997.6.5)



Ice Skating on Lake Eden (2000.3.1)



Shuttle-Craft Practical Loom from the Black
Mountain College Weaving Workshop
(2000.5.1)



Black Mountain College sign (2002.3.1)



Untitled (2002.8.1)



Untitled (2002.8.5)



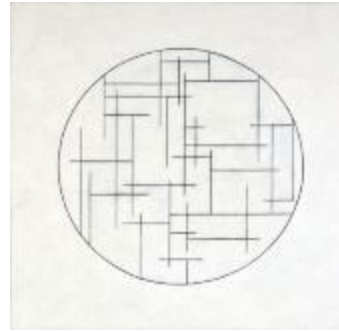
Ilya Bolotowsky at Black Mountain College
(2002.8.7)



Ruth Asawa at Black Mountain College
(2002.8.8)



Unidentified Student at Black Mountain
College (2002.8.9)



Untitled (2004.8.14)



Untitled (2004.8.5)



Untitled (2004.8.8)



Stool Made at Black Mountain College
(2007.2.1)



Farmhouse and Mountains (2007.2.9)



Leaf Conversation (2008.34.1)



Score for 3-Part Motet for Soprano, Alto and
Tenor (2009.8.1)



Untitled (2010.1.2)



Untitled (2010.1.3)



Ray Johnson (Back of Head) (2010.3.1)



Block Print #2 (2011.18.1)



Bookbinding for two volumes of Untermeyer's
British and American Poetry (2011.2.1)



Shawl (2013.12.2)



Untitled (2013.16.24)



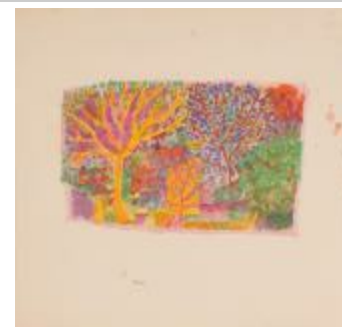
Untitled (2013.16.25)



Untitled (2013.16.28)



Untitled (Vase with Flowers) (2013.17.1)



Untitled (Landscape) (2013.17.10)



Untitled (Hillside Landscape) (2013.17.11)



Untitled (Design) (2013.17.12)



Untitled (Floral Design) (2013.17.13)



Untitled (Abstract) (2013.17.16)



Untitled (Flowers in Pot) (2013.17.2)



Untitled (Flowers/Abstract) (2013.17.3)



Untitled (Female Figure) (2013.17.4)



Untitled (Abstract) (2013.17.6)



Untitled (Floral Abstract) (2013.17.7)



Untitled (Floral Abstract Design) (2013.17.8)



Untitled (Female Figure) (2013.17.9)



Ducks on Lake Eden (2014.16.1)



Upholstery Fabric (2021.55.1)



Still Life with Open Door (2021.7.1)



Untitled (BMC) (2021.7.2)



Large Pitcher and Fruit (2021.7.4)



The Catch (2021.7.5)



Keyo (2021.7.8)



Head (2022.27.3)