



From BMC to NYC : the tutelary years of Ray Johnson 1943-1967 (120927010)



Nocturne (Memories of Merce) (1996.9.1)



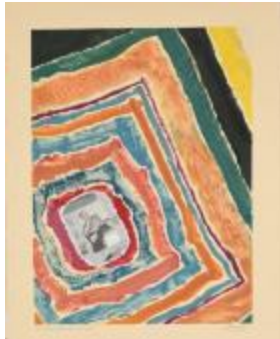
Kenneth Noland Drawing a Model at the Rue d'Assas Atelier of Instructor Ossip Zadkine (1996.9.2)



Ode to Ray Johnson (1996.9.4)



Art to Ray (2016.12.1)



Ray Johnson Dreaming about Josef Albers (2016.21.1)