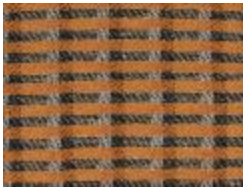


Transition I (1996.7.1)



Shirtsleeves (1996.7.3)



8 Harness Group Weaving Sample (1997.6.1)



8 Harness Group Weaving Sample (1997.6.2)



Throw (2006.20.1)



Dark Gray Throw (2006.20.2)



Placemats (2006.20.3)



Runner (2006.20.4)



Bay Area (2007.8.1)



Untitled from the Geodesic series (2008.8.1)



Cross (2009.5.1)



Napkins (2009.6.1-4)



Placemats (2010.1.1)



Path of Illumination #8 (2010.4.1)



Coach Tote Bag with Target (2013.10.1)



Cashmere Throw (2013.2.12)



Mohair Throw (2013.2.13)



Nantucket Looms Fabric Samples (2013.2.14)



Fiber Samples for Anni Albers' Weaving Class (2017.10.1)



Upholstery Fabric (2021.55.1)



Wall Hanging (2021.56.1)
