



**Chessboard (1995.13.1)**



**Still Life With Head (1995.3.4)**



**Untitled (1995.30.1)**



**Untitled (1995.30.2)**



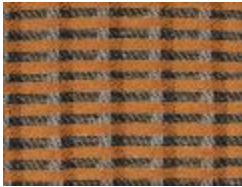
**Untitled (1995.30.3)**



**Kenneth Noland Drawing a Model at the Rue d'Assas Atelier of Instructor Ossip Zadkine (1996.9.2)**



**Program for The Ruse of the Medusa (1997.1.1)**



**8 Harness Group Weaving Sample (1997.6.1)**

---



**8 Harness Group Weaving Sample (1997.6.2)**

---



**Leaf Study (1997.6.3)**

---



**Design Study (1997.6.4)**

---



**Color Study (1997.6.5)**

---



**William Shrauger, Merce Cunningham, and Elaine de Kooning in the Black Mountain College production of The Ruse of Medusa (1998.2.1)**

---



**Josef Albers' Color Class (1998.2.2)**

---



**Wilma Furstenberg in the Weaving Workshop (1998.2.3)**



**Josef Albers' Color Class (1998.2.4)**



**The Ruse of Medusa Production (1998.2.5)**



**Ice Skating on Lake Eden (2000.3.1)**



**Shuttle-Craft Practical Loom from the Black Mountain College Weaving Workshop (2000.5.1)**



**Black Mountain College sign (2002.3.1)**



**Untitled (2003.1.2)**



**Untitled (Abstract Still Life) (2004.1.1)**



**Portrait of Sheila Marbain (2004.5.1)**



**Two Women (2004.6.1)**



**Untitled (2004.8.10)**



**Untitled (2004.8.5)**



**Untitled (2004.8.7)**



**Untitled (2004.8.9)**



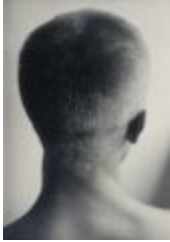
**Wooden Plates Made at Black Mountain College (2007.2.2-8)**



**Untitled (2010.1.2)**



**Untitled (2010.1.3)**



**Ray Johnson (Back of Head) (2010.3.1)**



**Shawl (2013.12.2)**



**Untitled (Vase with Flowers) (2013.17.1)**



**Untitled (Landscape) (2013.17.10)**



**Untitled (Hillside Landscape) (2013.17.11)**



**Untitled (Design) (2013.17.12)**



**Untitled (Floral Design) (2013.17.13)**



**Untitled (Abstract) (2013.17.16)**

---



**Untitled (Flowers in Pot) (2013.17.2)**

---



**Untitled (Flowers/Abstract) (2013.17.3)**

---



**Untitled (Female Figure) (2013.17.4)**

---



**Untitled (Abstract) (2013.17.6)**

---



**Untitled (Floral Abstract) (2013.17.7)**

---



**Untitled (Floral Abstract Design) (2013.17.8)**

---



**Untitled (Female Figure) (2013.17.9)**



**Quiet House Door (2018.8.1)**



**Landscape (2019.1.2)**



**Garden (2019.1.4)**



**Untitled (2019.1.5)**



**Untitled (2019.1.6)**



**Early Elipse Drawing from Portfolio with Templates (2019.1.8)**



**Upholstery Fabric (2021.55.1)**

---



**Head (2022.27.3)**

---